

Get set Southwark



**Borough & Bankside Community
Council**

Tuesday 13 March 2012



*host borough of the
Olympic and Paralympic Games*

www.southwark.gov.uk/london2012

Welcome...



136 days to go...!



www.southwark.gov.uk/london2012

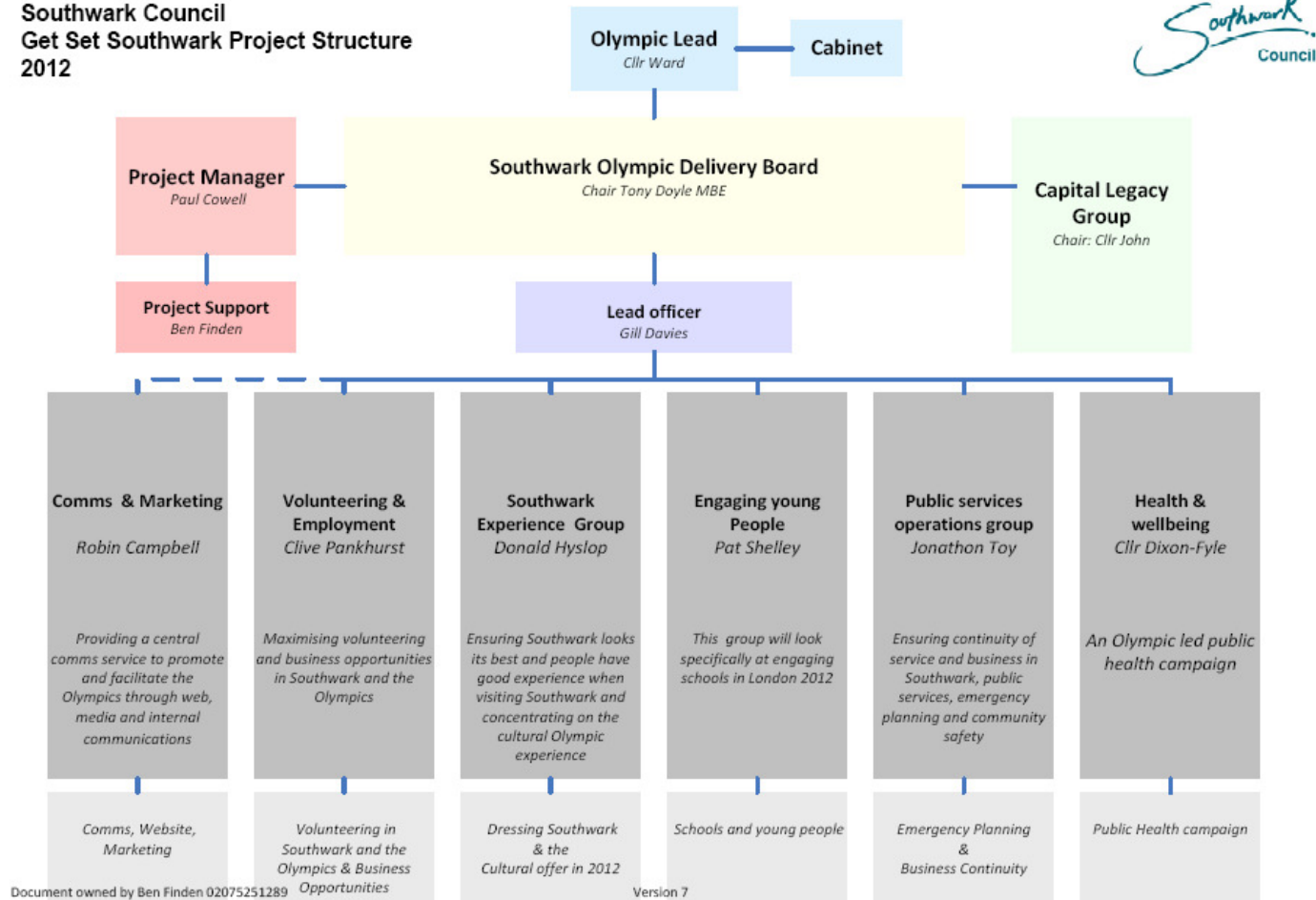
Coming up...

- How Get Set Southwark is organised
- Operational planning
- Transport and networks
- Engaging Young People
- Borough and Bankside specifically
- The Southwark Experience
- Capital legacy fund



Southwark 2012: an overview

Southwark Council
Get Set Southwark Project Structure
2012



www.southwark.gov.uk/london2012

Operational planning

The operational planning group has been set up to ensure Southwark supports an inspirational, safe and inclusive games

The group considers the following impacts:

- Footfall
- Cleanliness
- Safety and security
- Illegal trading / environmental enforcement
- Health and safety
- Operational planning and testing
- **Transport and networks**



Transport and networks

Key dates



- Olympic Torch Relay starts (UK Wide) 18 May 2012
- Accredited media centre opens 25 Jun 2012
- Village and Olympic Route Network opens 15 Jul 2012
- Torch Relay arrives in London 21 Jul 2012
- Olympics – Opening Ceremony 27 Jul 2012
- Olympics – Closing Ceremony 12 Aug 2012
- Paralympics – Opening 29 Aug 2012
- Paralympics – Closing 09 Sept 2012
- Village closes 16 Sept 2012



Transport and networks

Impact on London

- 8 million tourists expected if this was a typical year.
- Extra 4 million people expected
- 20 million extra trips will be made within London during the 2012 Games
- 80% of spectators will travel by rail (including the Underground)



Transport and networks

Impact on services

The Games are likely to impact on service delivery in four main areas:



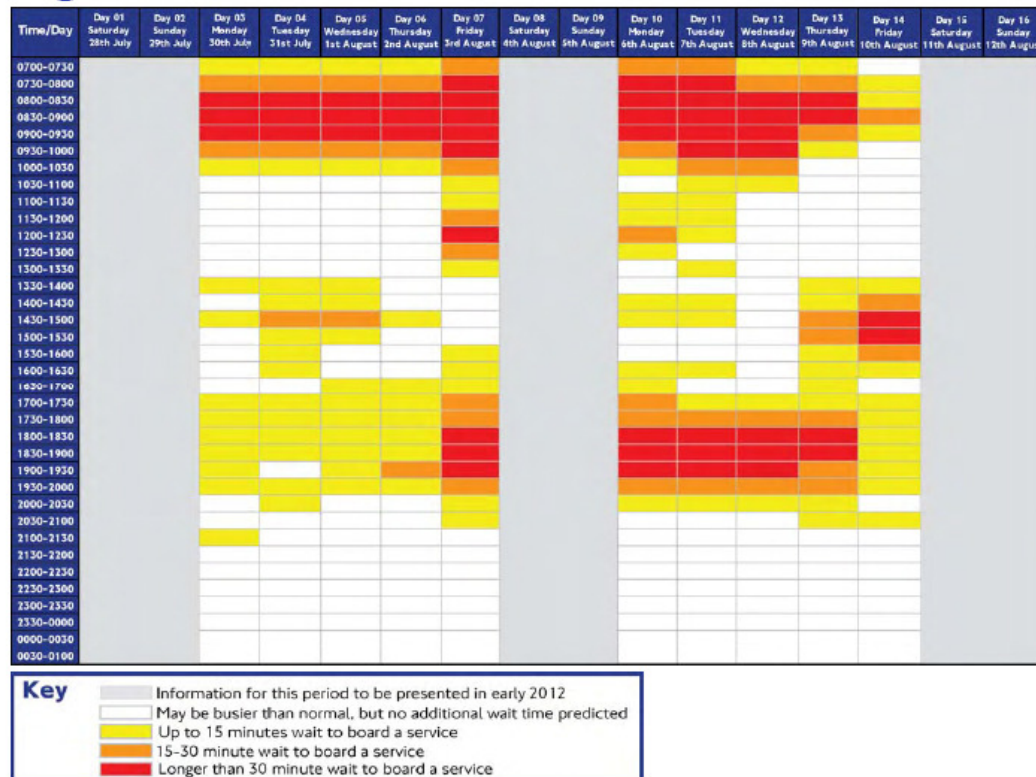
- **Journeys to and from work (commute)**
- **Business travel**
- **Travel for customers or other visitors**
- **Deliveries/collections and other suppliers**



Transport and networks

London underground issues

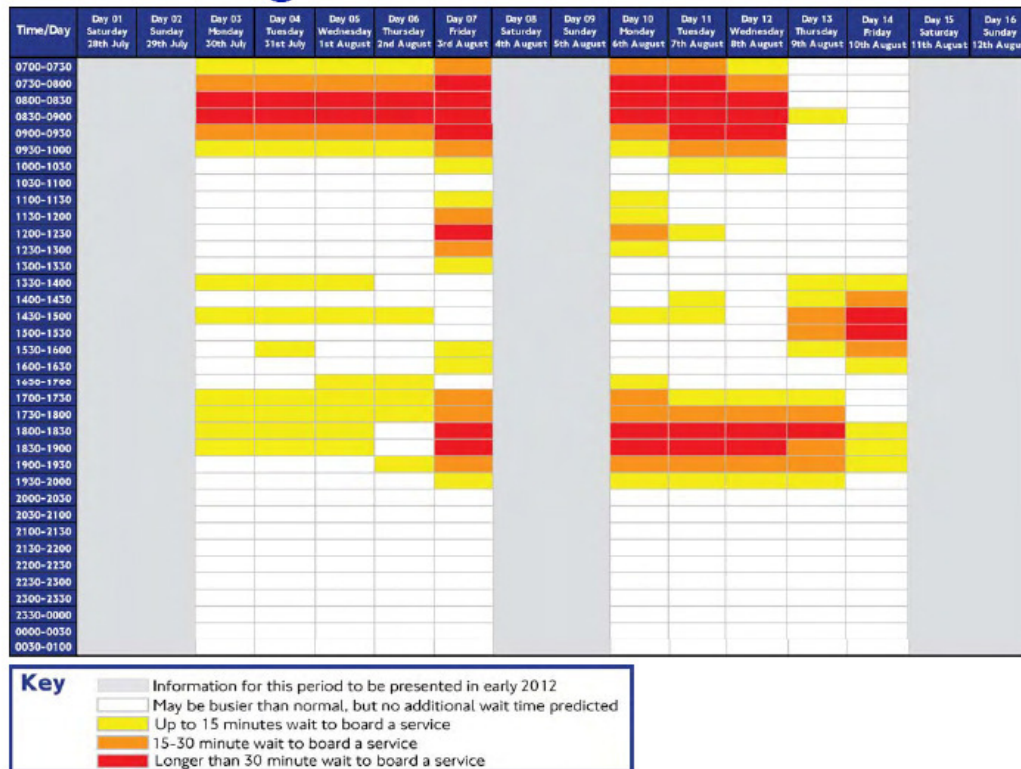
Canada Water Tube station waiting times if no change in behaviour



Transport and networks

London underground issues

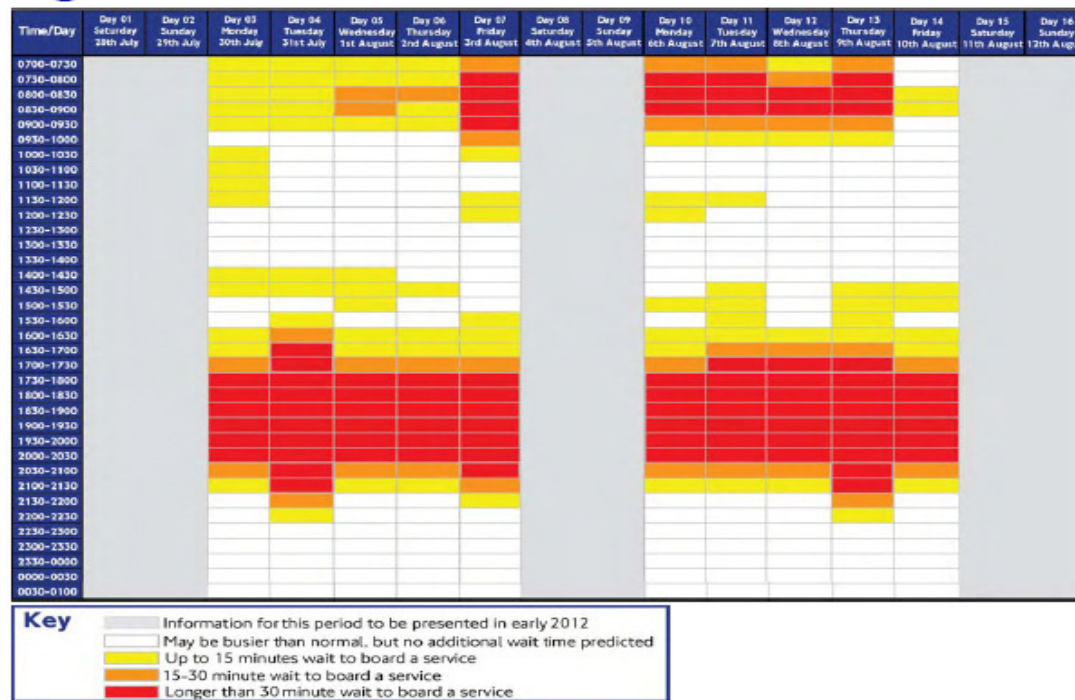
Canada Water Tube station waiting times, after initial change in behaviour



Transport and networks

London underground issues

London Bridge Tube station waiting times if no change in behaviour



Transport and networks

London underground issues

London Bridge Tube station waiting times, after initial change in behaviour



Transport and networks

Road Network

- **ORN = Olympic Route Network**

X Not in Southwark

The network of Olympic lanes dedicated to athletes and VIP travel and linking the competition venues

- **AORN = Alternative Olympic route network**



The AORN will be implemented in the event that for whatever reason the ORN cannot be used and when the marathon road races are on.

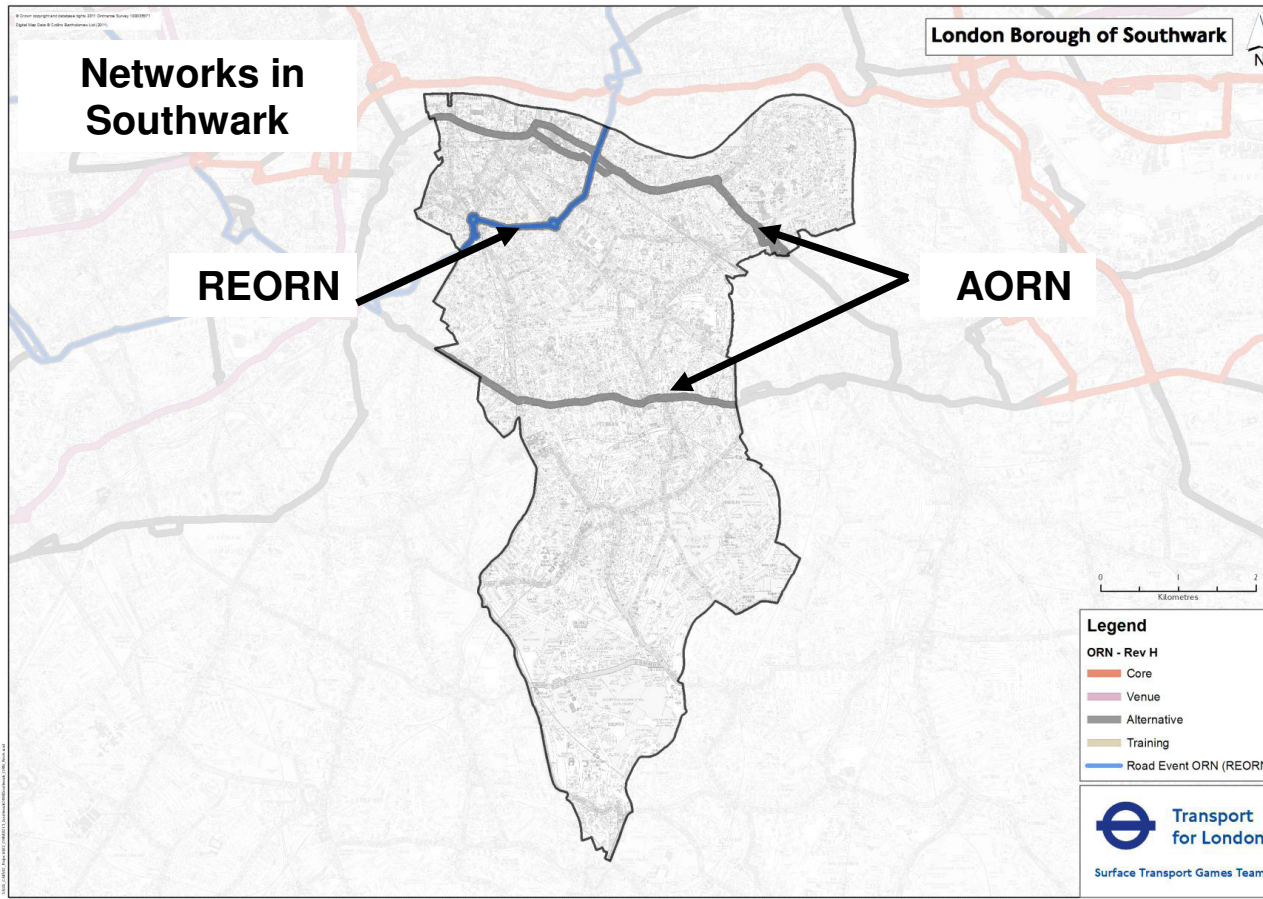
- **REORN = Road Event Olympic route network**



The REORN will be implemented during road events.



Transport and networks



www.southwark.gov.uk/london2012

Transport and networks

REORN = Road Event Olympic route network

- Only Marathon days will directly impact Southwark
- A201 New Kent Road & A100 Tower Bridge Road
- Days of Operation:
 - **Day 9** **Sunday 5th August 2012**
 - **Day 16** **Sunday 12th August 2012**
- Types of Measures:
 - Traffic signal timing changes (similar to current policy on A201/A100 corridor)
 - Stopping restrictions adjusted



Road works during London 2012

TfL approach

TfL embargo preventing all non emergency street works/road works on:

- The ORN, AORN and REORN
- All A and B roads throughout London from **1st March 2012 to 30th September 2012**

Southwark's approach

- A road works embargo will be placed on all roads in the north of the borough.
- Southwark's embargo enforced from **1st July 2012 – 9th September 2012.**
- Torch Relay Route: Rolling road closures



Engaging Young People

The engaging young people working group has approached task by focusing on 5 specific elements:



**Schools
Sport
Culture
Volunteering
Communications**

Engaging Young People

Schools team

- Curriculum underpinned by the Olympic and Paralympic values
- Olympics newsletter for schools
- 95% sign up to the Get set network education programme

Sports team

- Promotional events across the borough
- Exclusive young women's programme
- 'Sportivate' programme
- Sports Leaders Award

Culture team

- Big Dance 2012
- Southwark Theatres Education Partnership Youth Theatre Showcase
- Carl Campbell Dance Company Contemporary Caribbean Dance Project



2011-12 Targets

7,375 total individuals (6,801 / (92%) @ Feb 12)

47,375 total audiences (45,638 / (96%) @ Jan 12)

Engaging Young People

Volunteering team

- 120 volunteering opportunities for young people
- Project launched 23rd July 2011
- Diverse range of opportunities available



Accreditation team

- AQA units for all young volunteers
- Signposting accreditation

Legacy Offer

- A culture of volunteering among young people
- Increase participation in cultural activities
- Partnerships with Southwark's employers
- Develop the skills of our future leaders

Libraries team

- Readathon! May – June 2012
- Poetry relay – July 2012
- Olympic Games Wii tournament – July 2012



www.southwark.gov.uk/london2012

Borough and Bankside specifically

- House of Switzerland
- Discovery Trails
- Night time deliveries
- Olympic market
- Rings on Tower Bridge
- Riverside walkway accessibility project
- Subletting (private and council tenancies)
- Street dressing



Southwark Experience

Ensuring that Southwark looks and feels its best during Games time and to market the borough's significant cultural offer.

Over 200 cultural events and activities during the Games including:

Rings on the River

Largactyl Shuffle

Spectaculars

The Elephant and the Nun

Globe to Globe

Showtime

Theatre Peckham

Boundless

Andy Warhol

Damien Hurst

Thames Festival

Carve in the Community

London 2012 Festival

Visitor information

Summer culture brochure for June – September (joint working with BIDs)

Southwark Experience

Look and Feel 2012:

- **Southwark Experience Zone**
 - £320K GLA funded street dressing programme for north of the borough
- **Your 2012**
 - £50k GLA funded street dressing programme that includes Camberwell

Other public realm projects:

- **Riverside accessibility project**
 - £2.6m GLA funded project to Southwark to improve accessibility on river
- **Legible London project**
 - £250k externally funded project to improve way finding



Themed Experience Zone

Dressing



Banners

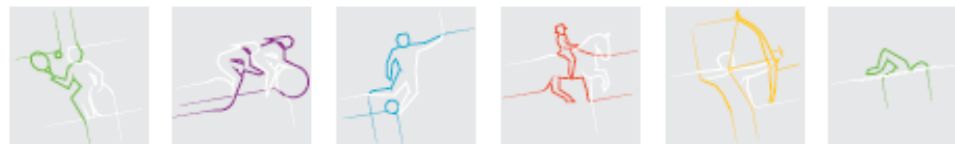


Small Decals



Flags

Large Decals



Volunteering and employment

- Volunteering strategy
- Web portal managed by the Southwark volunteer centre
- Outreach to help local groups develop 2012 inspired opportunities
- Working closely with Engaging Young People



Health and wellbeing

A successful Health Factor Challenge – delivered in the summer of 2011

New activity:

GIVE IT A GO
take the Health Factor Challenge

GIVE IT A GO
take the health factor challenge

- **Promoting disability friendly amenities in Southwark, including the new capital legacy projects**
- **Increasing the available bicycle parking capacity in the north of the borough**
- **‘Everyday Games’ event to celebrate everyday activities that improve health**
- **Promote free exercise: outdoor gyms, parks and open spaces**



Communications and marketing

Keeping up to date

- **The monthly Get Set Southwark e-bulletin – 6000 subscribers.**
Please visit the Southwark Council website home page for a link to sign up – it takes less than 30 seconds
- **The Southwark Council Website – Over 20 dedicated pages**
www.southwark.gov.uk
- **TFL web pages**
www.tfl.gov.uk
- **LOCOG web pages**
www.london2012.com
- **Southwark Council publications : Southwark Life**



Our Olympic legacy unveiled

We reveal the winners of Southwark's £2m Olympic fund to bring a lasting difference to sport in your area

The winners are set to receive their share of the £2m Olympic fund, which will be used to support a range of sports and activities in the borough. The fund was set up to support the Olympic legacy and to help improve the lives of young people in the borough. The fund will be used to support a range of sports and activities in the borough. The fund will be used to support a range of sports and activities in the borough.



Capital Legacy Fund:

- 40 unique submissions received for stage one (Total = £8.7m)
- 17 projects invited back to stage two of funding process
- 10 projects chosen for funding and decision approved at member level
- Implementation stage now underway
- First project to complete will be Peckham Pulse Disability Pool Hoist

Capital Legacy Fund: successful projects

#	Project name	Value of Bid (£000s)	Recommendation	Amount awarded (£000s)
1	Bethwin Sports	95	Full award	95
2	Burgess Park BMX Track	150	Full award	150
3	Camberwell Leisure Centre Sports Hall	493.25	Part award	490
4	Herne Hill Velodrome	490	Part award	400
5	Homestall Road Sports Ground Development	175	Full award	175
6	Outdoor disability multi-sports court	85	Full award	85
7	Peckham Pulse Pool Hoist	5.6	Full award	5.6
8	Peckham Rye Pitches & changing rooms	250	Part award	200
9	Southwark Park Sports complex	500	Part award	370
10	Trinity College Centre Outdoor sports area	30	Full award	30
TOTAL		3612.35		2000.6

14 projects were presented to CLG group for stage 2 of the funding process.

10 projects have been successful:

•6 Full award

•4 Part award



Questions...



Thank you...

For any further information please contact

Paul Cowell
020 7525 0857
paul.cowell@southwark.gov.uk

Ben Finden
020 7525 1289
benjamin.finden@southwark.gov.uk

OR

By email to London2012@southwark.gov.uk



www.southwark.gov.uk/london2012